

# Welcome

Please turn off your microphone and video

Questions can be asked in the chat

Please be aware that this session will be recorded

ново  
нордиск  
фонден

# Introduction to Researchfish®

Webinar - December 2024

Head of Data, NNF-Impact  
Rasmus Lund Jensen

Junior Analyst, NNF-Impact  
Nora Jensen

# Agenda

- Introduction to the reporting platform Researchfish®
- Why reporting is important
- What the reporting is used for
- How you report

## Working together to understand impact



Global solution to track research and evidence impact



Researchfish uses technology to collect outputs, outcomes and impacts of research from the web, external data sources, and the researcher themselves.

# Researchfish®

Since 2015, the Novo Nordisk Foundation has used Researchfish® as our reporting platform for all scientific grants.

Researchfish® was introduced in 2008 by the British Medical Research Council to assist in data gathering, research tracking and measurement of grant impact.

More than **200** research funders and universities worldwide use Researchfish®.

Annually, more than 2,500 grantees who have received grants from the NNF report in Researchfish®.

## Working together to understand impact



Global solution to track research and evidence impact



Researchfish uses technology to collect outputs, outcomes and impacts of research from the web, external data sources, and the researcher themselves.

# Agenda

- Introduction to the reporting platform Researchfish®
- **Why reporting is important**
- What the reporting is used for
- How you report

## Working together to understand impact



Global solution to track research and evidence impact



Researchfish uses technology to collect outputs, outcomes and impacts of research from the web, external data sources, and the researcher themselves.

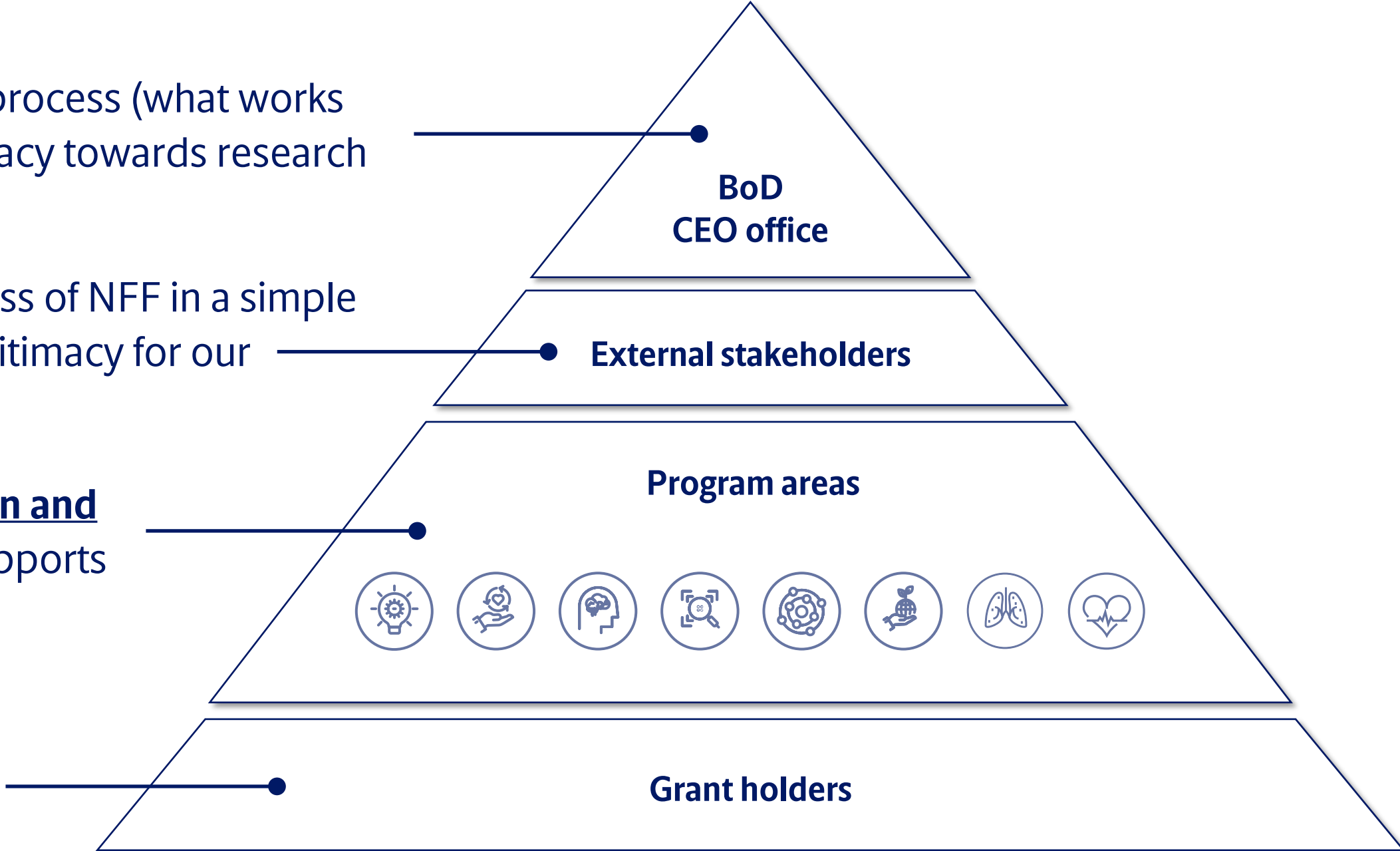
# Why reporting is important for Novo Nordisk Foundation

We support an **informed decision** process (what works and what does not) used for advocacy towards research funding.

We **communicate** the overall success of NFF in a simple way to create transparency and legitimacy for our research funding.

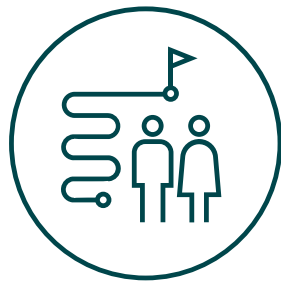
We support and facilitate **evaluation and learning** in the organization that supports impact management.

We circle back input, output and outcome data to the grant holder to facilitate **learning**.

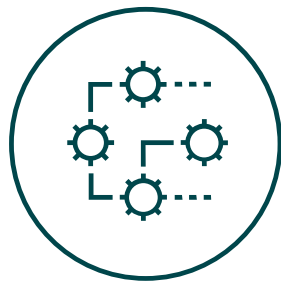


# The 9 Societal Impact principles for the Foundation

## Output



**Fostering** the development of talent across different gender, life ages and scientific fields

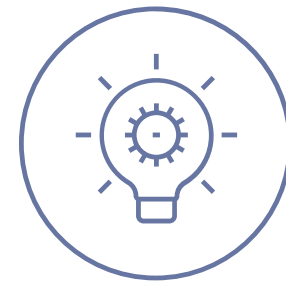


**Supporting** organisations, systems, and infrastructure to catalyse a knowledge-based societal development



**Stimulating** collaboration across international borders, scientific disciplines, and sectors in society

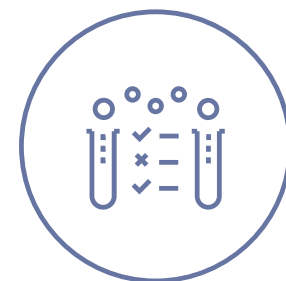
## Outcome



**Promoting** excellent research and innovation



**Developing** innovative products and solutions supporting a sustainable development



**Developing** new technologies, therapies and patient-centred and research-based care and disease prevention

## Impact



**Creating** jobs, sustainable growth, efficient use of resources and productivity in society



**Support** the development of world-class education at all levels and of a qualified and agile workforce



**Supporting** people in difficult health, social, environmental, and humanitarian settings

# Agenda

- Introduction to the reporting platform Researchfish®
- Why reporting is important
- **What the reporting is used for**
- How you report

## Working together to understand impact



Global solution to track research and evidence impact



Researchfish uses technology to collect outputs, outcomes and impacts of research from the web, external data sources, and the researcher themselves.



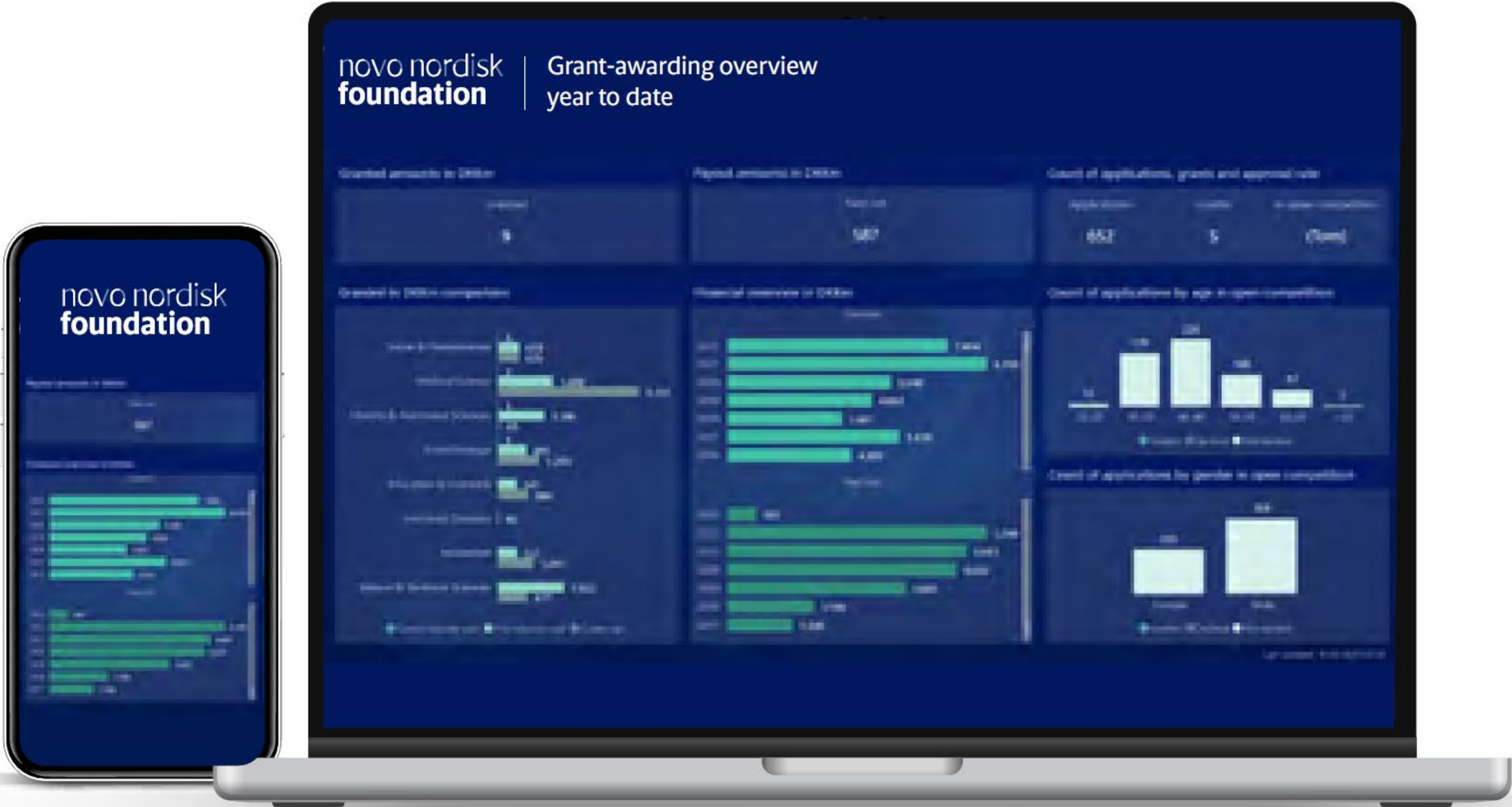
# ○ Nine principles for societal impact

- **Fostering** the development of research talent 
- **Investing** in infrastructure 
- **Supporting** research collaboration 
- **Promoting** excellent research 
- **Developing** innovative products and solutions 
- **Creating** jobs and growth 
- **Developing** healthcare and new medicine 
- **Developing** world-class education 
- **Empowering** vulnerable groups in society 

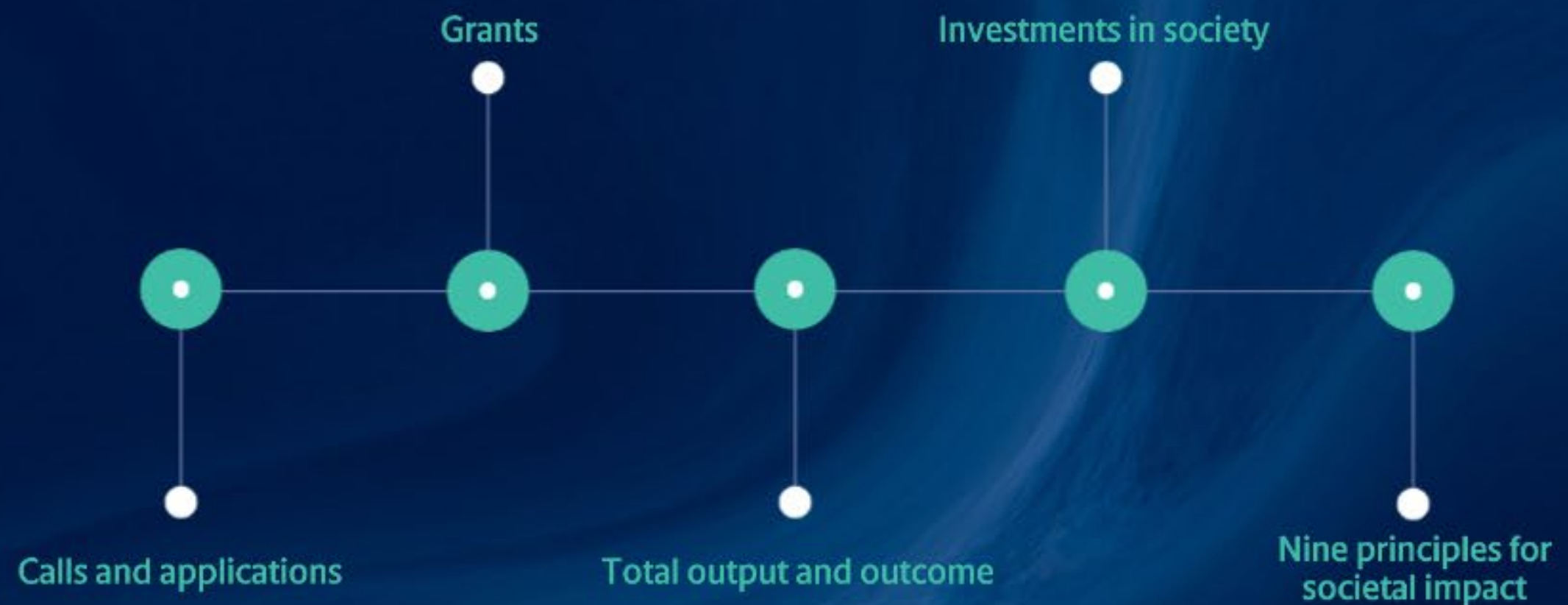
## How we use your data in practice!



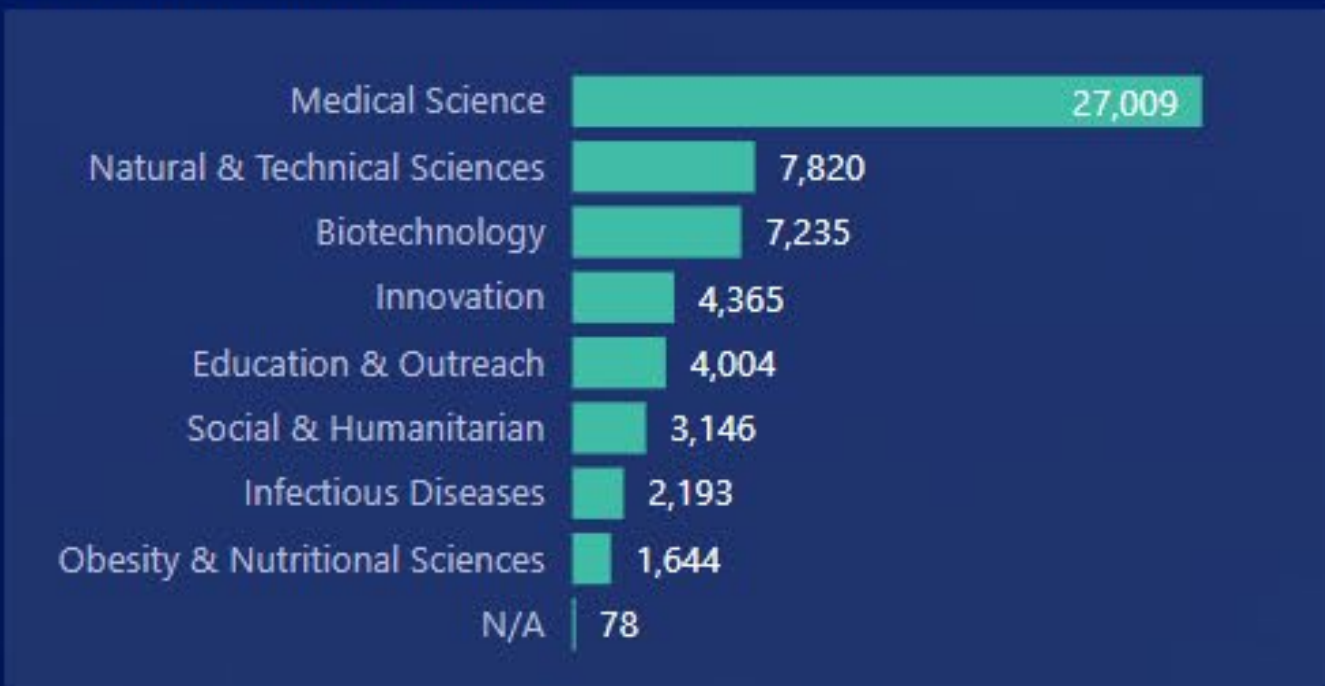
# The NNF Dashboard



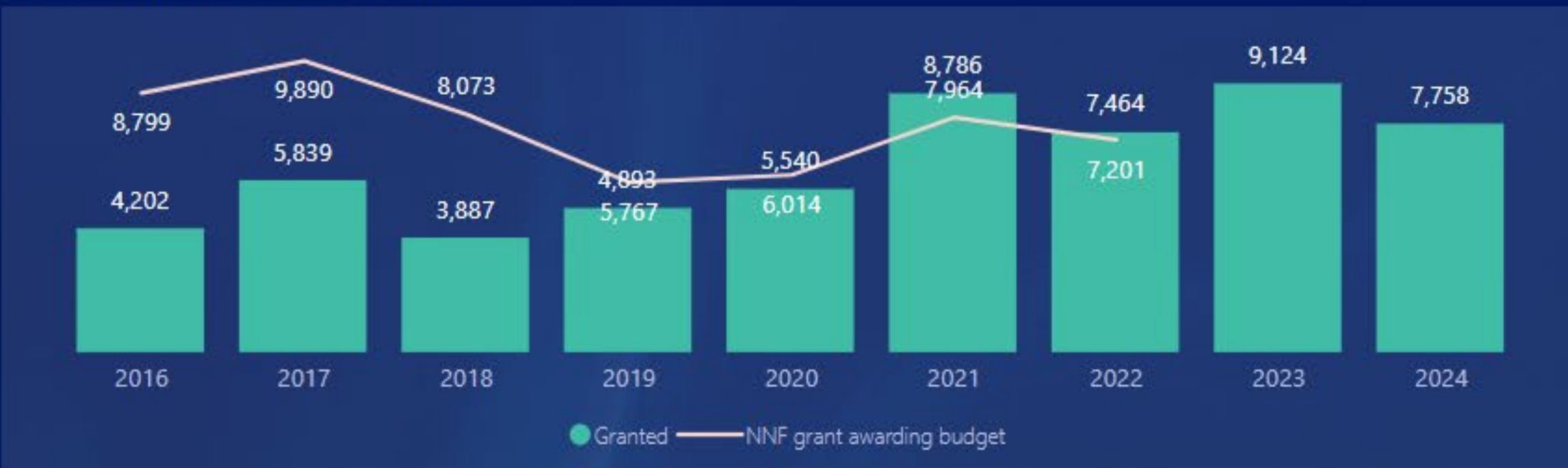
<https://novonordiskfonden.dk/facts-and-figures/>



## Granted in DKKm per area



## Granted and budgeted in DKKm



## Granted in DKKm



## Count of grants



## Granted in DKKm per administrating institution worldwide



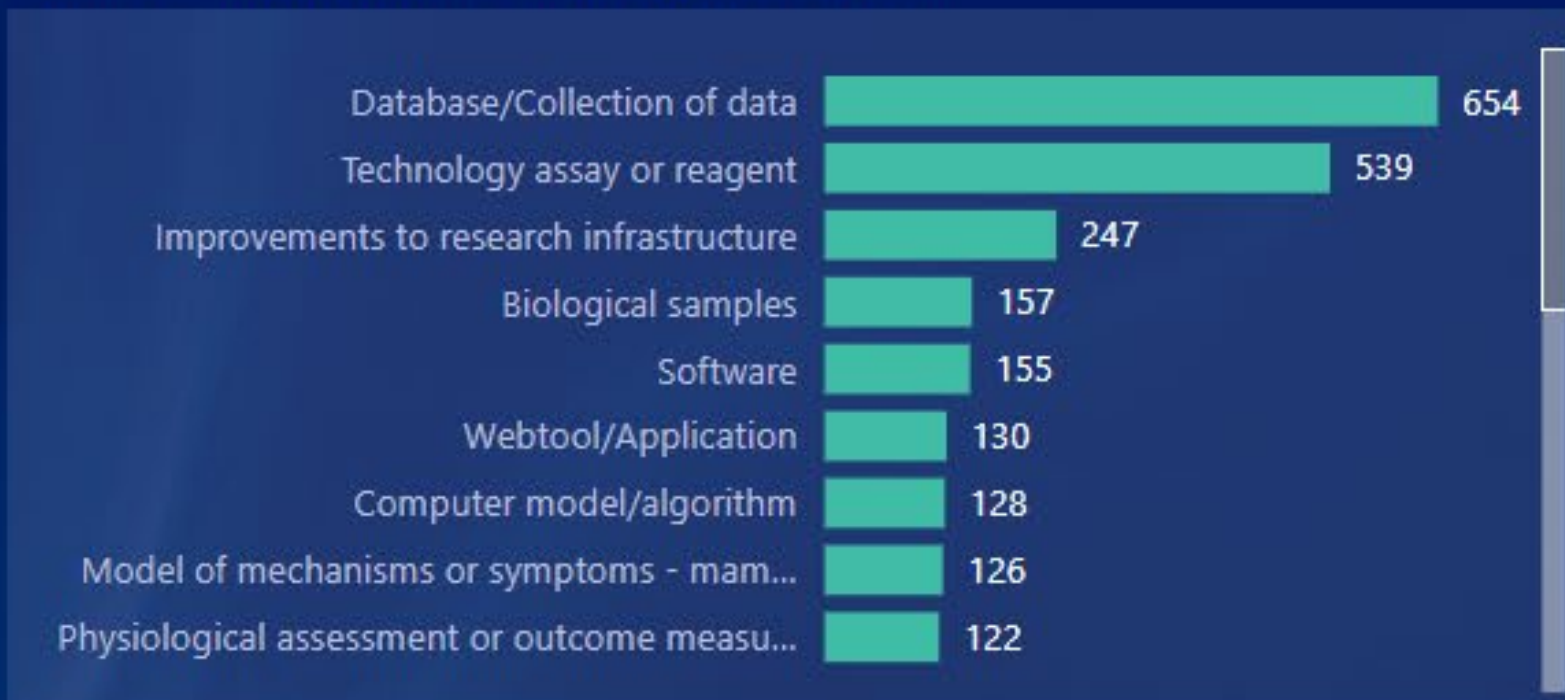
## Granted in DKKm in Nordic regions



Count of tools, methods and products



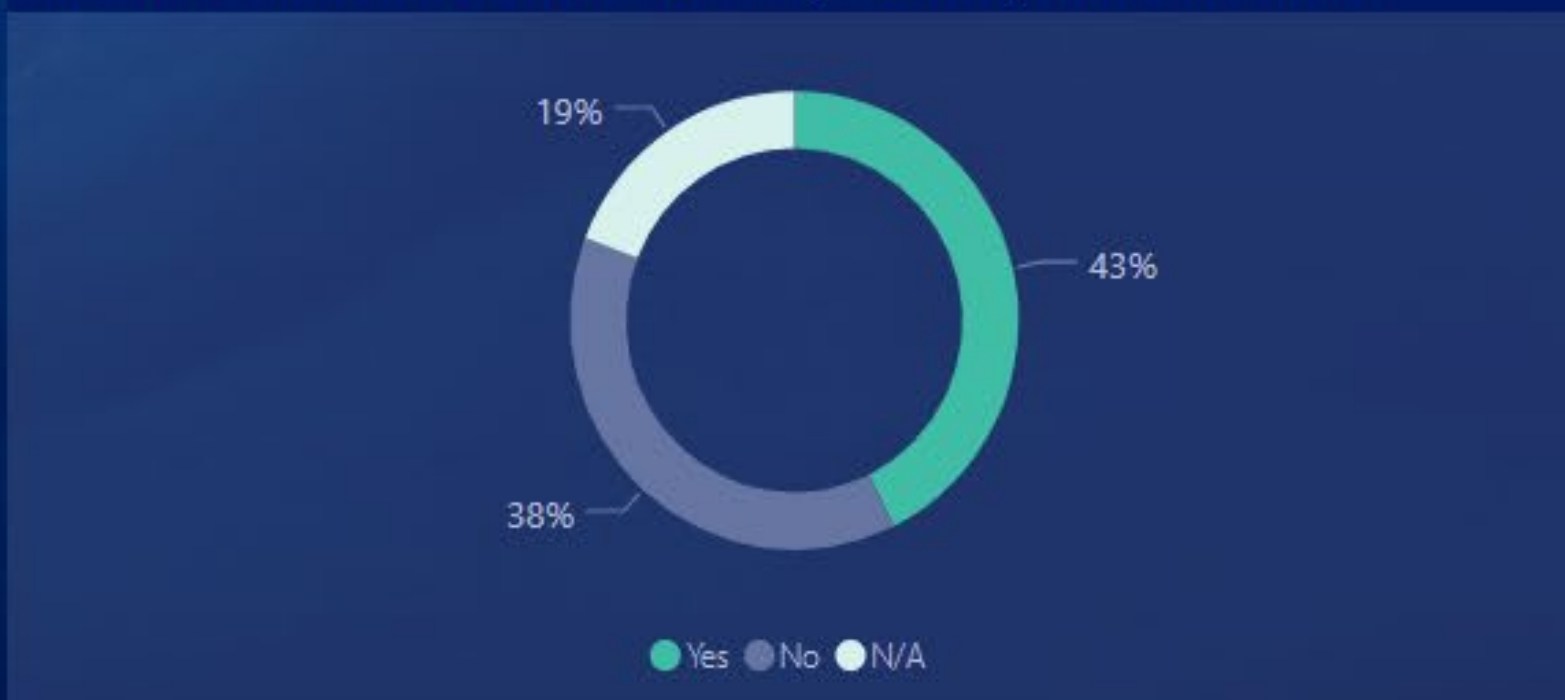
Count of tools, methods and products by type



Count of tools, methods and products, in total and by category



Count and share of tools, methods and products provided to others

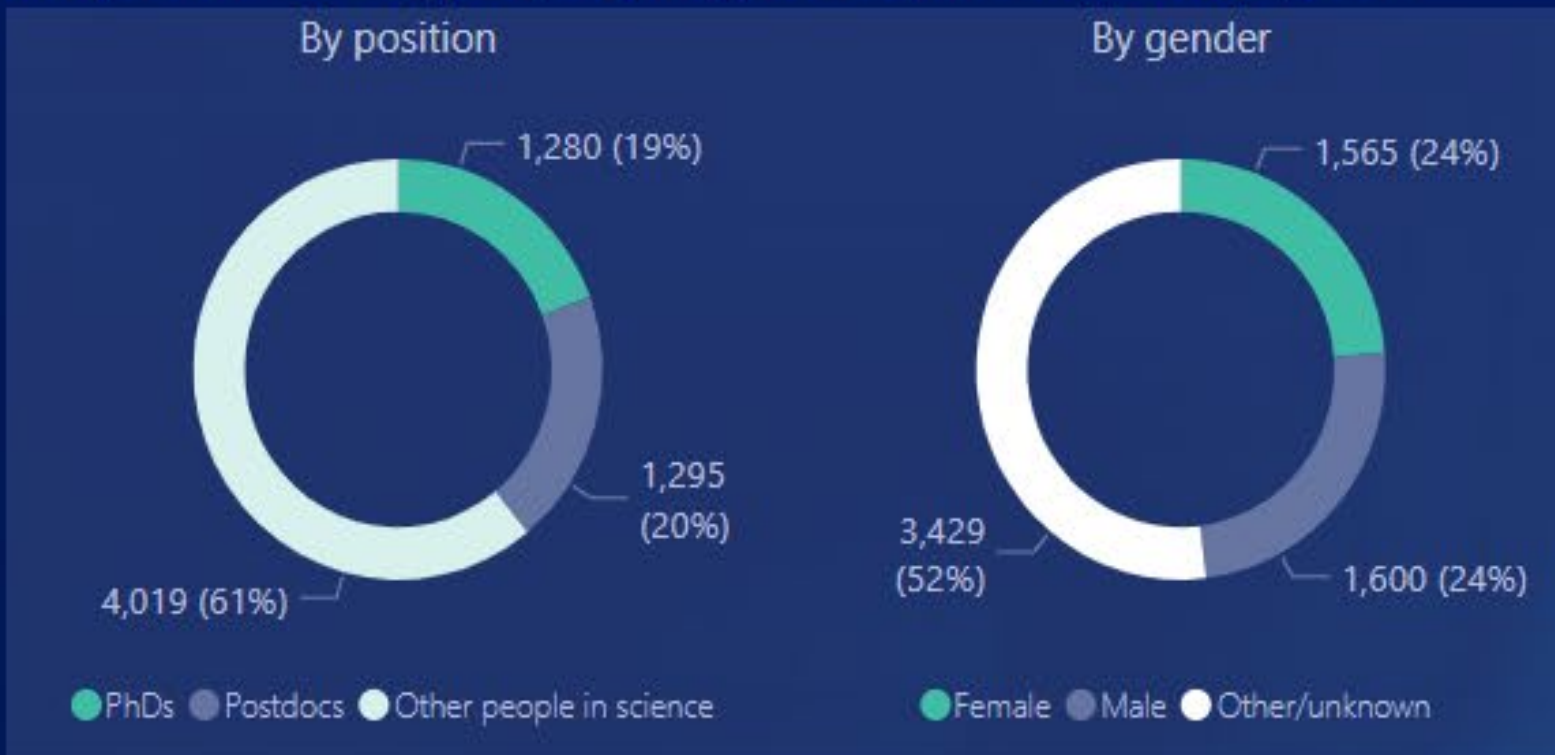


- General information
- Funding
- Team members and staff
- Collaboration and network
- Education
- Engagement
- Publications
- Tools, methods and products
- Personal recognition
- Bibliometrics
- Commercial activities
- People reached
- Users reached

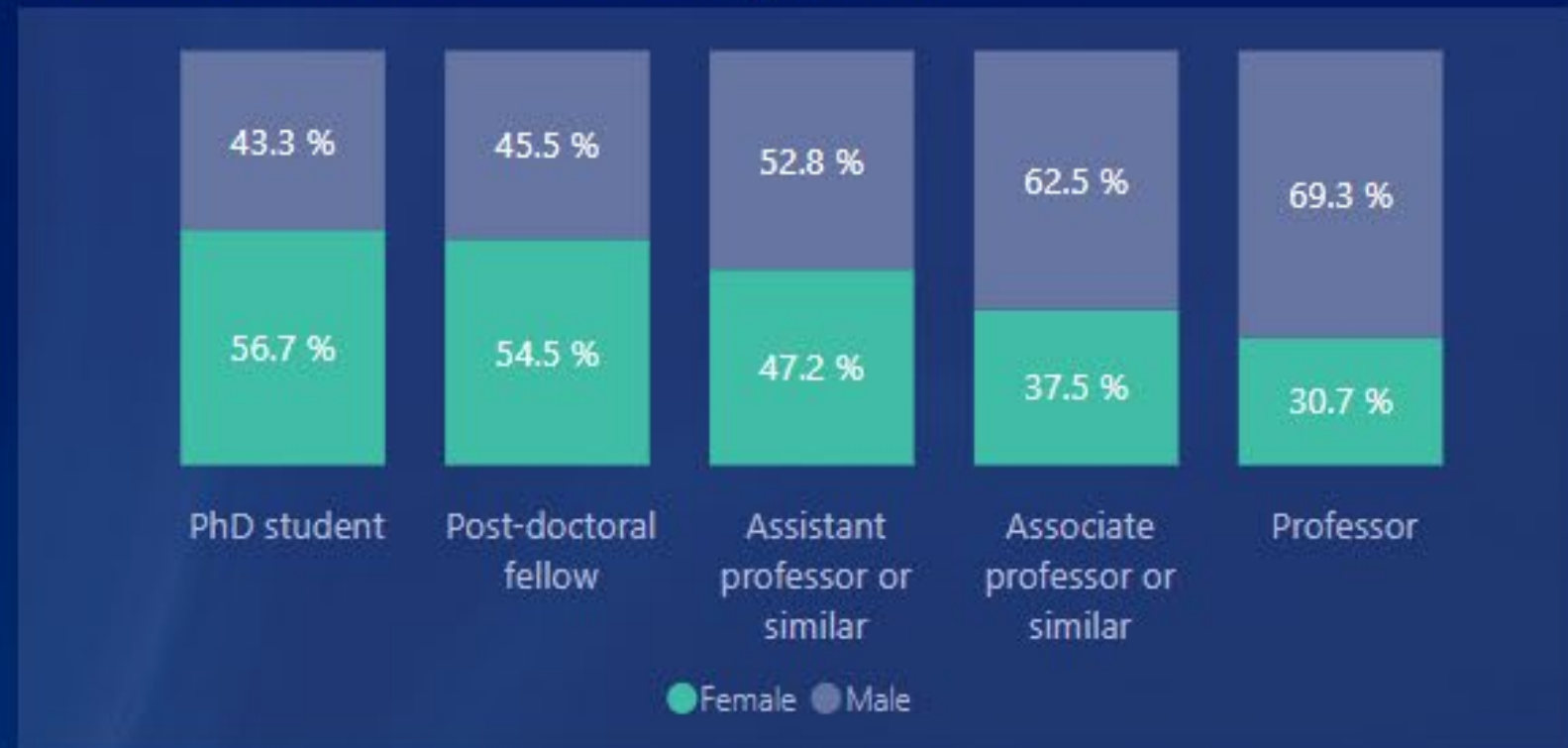
# 1. Development of talent



People in science fully or partly supported by the Foundation's grants



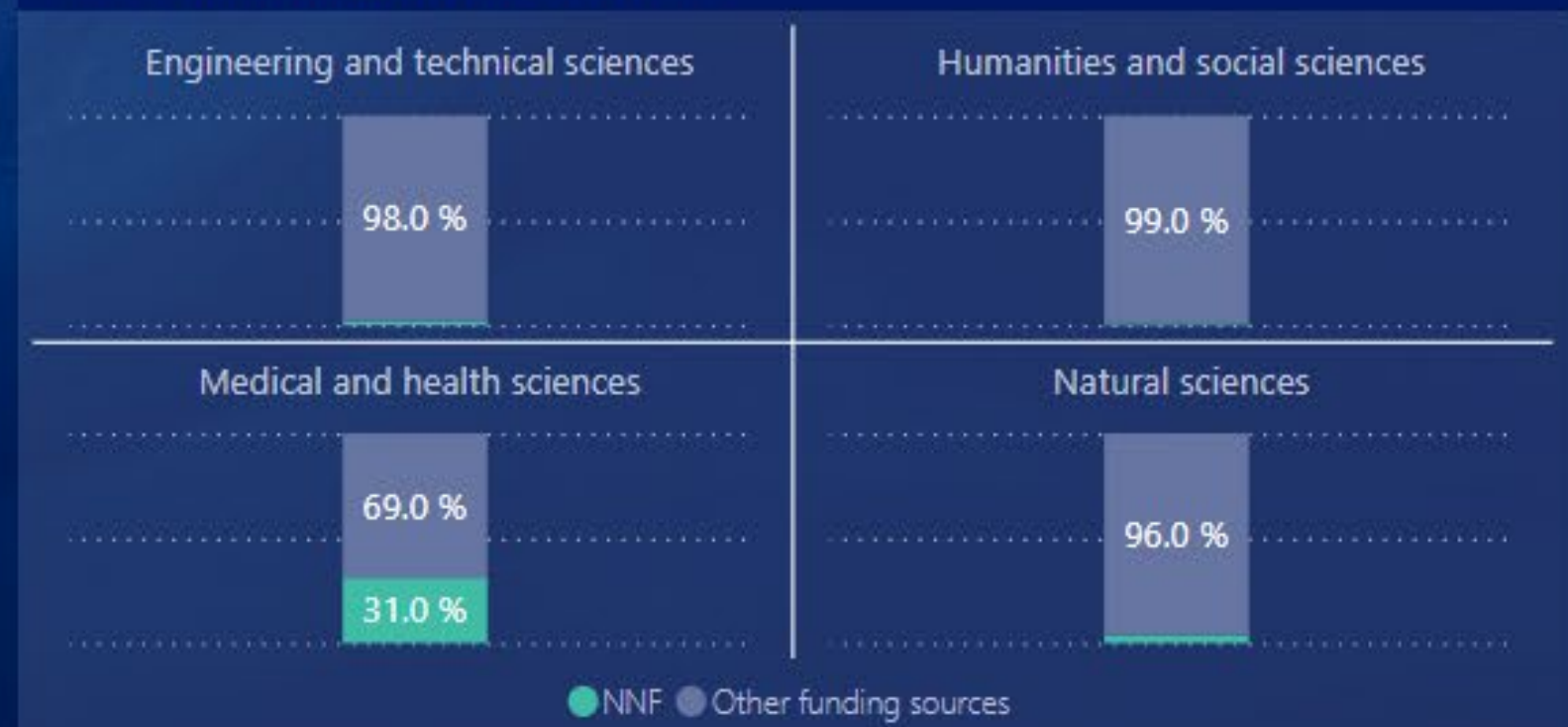
Gender distribution across scientific positions



Count of team members across scientific fields



Share of PhD students in Denmark



- 1. Development of talent
- 2. Supporting knowledge-based societal development
- 3. Stimulating collaboration
- 4. Promoting excellent research and innovation
- 5. Developing innovative products and solutions
- 6. Developing new therapies
- 7. Creating jobs and sustainable growth
- 8. Support education
- 9. Supporting people in difficult settings

# Agenda

- Introduction to the reporting platform Researchfish®
- Why reporting is important
- What the reporting is used for
- **How you report**

## Working together to understand impact



Global solution to track research and evidence impact



Researchfish uses technology to collect outputs, outcomes and impacts of research from the web, external data sources, and the researcher themselves.

# Reporting in Researchfish®

Researchfish helps us collect data on the outcome from:

## ***15 - Common Funder Questions***

- Publications
- Collaborations & Partnerships
- Further Funding
- Next Destination
- Engagement Activities
- Influence on Policy, Practice, Patients & the Public
- Research Tools & Methods
- Research Databases & Models
- Intellectual Property & Licensing
- Medical Products, Interventions & Clinical Trials
- Artistic & Creative Products
- Software & Technical Products
- Spin Outs
- Awards & Recognition
- Use of Facilities & Resources

## ***Additional Funder Questions***


- Education and Professional Training
- Research-Team Information
- Supervisor and Mentor Activities
- Project Summary and Reflection
- Invention Disclosure & Ownership



# Reporting in Researchfish®

## 1 Login

Have you already linked your Researchfish account to your ORCID account?

 Login with ORCID

[Why link to ORCID](#)

or

Username \*

rij@novo.dk

Password \*

Log in [Forgot password or username?](#)



Don't have a Researchfish account yet? [Request an invite](#)

## 2 Your award(s)

My Awards

Awards I am responsible for

**Novo Nordisk Fonden: Submission due by 15 Jan 2024** [REVIEW & SUBMIT](#)

Funder	Award ref	Award name	Submission status	Days left for submission	Research team	Action
	NNF190C0000010	NNF Demo/test Award 10	Submission required 	1 month 1 week	Rasmus Lund Jensen, Katrine Iversen	<a href="#">GO TO AWARD</a>

## 3 Report on outcomes

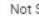
NNF Demo/test Award 10

**Your award still requires submission**

Please confirm that the information you have reported below is correct, and submit this information to your funder.

[RECORD YOUR PROGRESS](#) [REVIEW & SUBMIT](#)

Current award: NNF Demo/test Award 10

Common Outcomes	Award Details	Funding Organisation								
Publications: 4	Title: NNF Demo/test Award 10	How is my data used? <a href="#">novo nordisk fonden</a>								
Collaborations & Partnerships: 4	Award Reference: NNF190C0000010	Novo Nordisk Fonden								
Further Funding: 2	Research Organisation: California Institute of Technology	Research Team								
Next Destination: 2	Principal Investigator/Award Holder: Rasmus Lund Jensen	<table border="1"><thead><tr><th>Name</th><th>Role</th></tr></thead><tbody><tr><td>Rasmus Lund Jensen</td><td>Principal Investigator/Award Holder</td></tr><tr><td>Katrine Iversen</td><td>Team Member</td></tr><tr><td>Anders Agerbaek Kjeller Nielsen</td><td>Delegate</td></tr></tbody></table>	Name	Role	Rasmus Lund Jensen	Principal Investigator/Award Holder	Katrine Iversen	Team Member	Anders Agerbaek Kjeller Nielsen	Delegate
Name	Role									
Rasmus Lund Jensen	Principal Investigator/Award Holder									
Katrine Iversen	Team Member									
Anders Agerbaek Kjeller Nielsen	Delegate									
Engagement Activities: 10	Funding Organisation: <a href="#">Novo Nordisk Fonden</a>	<a href="#">MANAGE TEAM</a>								
Influence on Policy, Practice, Patients & the Public: 4	Funding Value: 1 DKK	<a href="#">ADD DELEGATE OR TEAM MEMBER</a>								
Research Tools & Methods: 1	Funding Start Date: 1 Jan 2019									
Research Datasets, Databases & Models: 2	Funding End Date: 31 Dec 2035									
Intellectual Property & Licensing: 2	Research organisation sharing: Not Shared 									
Medical Products, Interventions & Clinical Trials: 0										
Artistic & Creative Products: 1										

## 4 Review & submit

Proceed to 'Review & Submit'

You cannot proceed until all mandatory requirements have been met.

**NNF Demo/test Award 10**

[Invention Disclosure & Ownership](#) (Required)

[CANCEL](#)

## 5 Review the data

[RECORD YOUR PROGRESS](#) [REVIEW & SUBMIT](#)

Reviewing outcomes attributed to *NNF Demo/test Award 10*

Common outcomes added to this award

- PUBLICATIONS (4)
- COLLABORATIONS & PARTNERSHIPS (3)
- FURTHER FUNDING (1)
- NEXT DESTINATION (2)
- ENGAGEMENT ACTIVITIES (8)
- INFLUENCE ON POLICY, PRACTICE, PATIENTS & THE PUBLIC (3)
- RESEARCH TOOLS & METHODS (1)
- RESEARCH DATASETS, DATABASES & MODELS (1)
- INTELLECTUAL PROPERTY & LICENSING (2)
- ARTISTIC & CREATIVE PRODUCTS (1)
- AWARDS & RECOGNITION (2)
- OTHER OUTPUTS/OUTCOMES (1)

Additional information

Education and Professional Training	✓
Invention Disclosure & Ownership	✓
Research-Team Information	✓

## 6 Submit

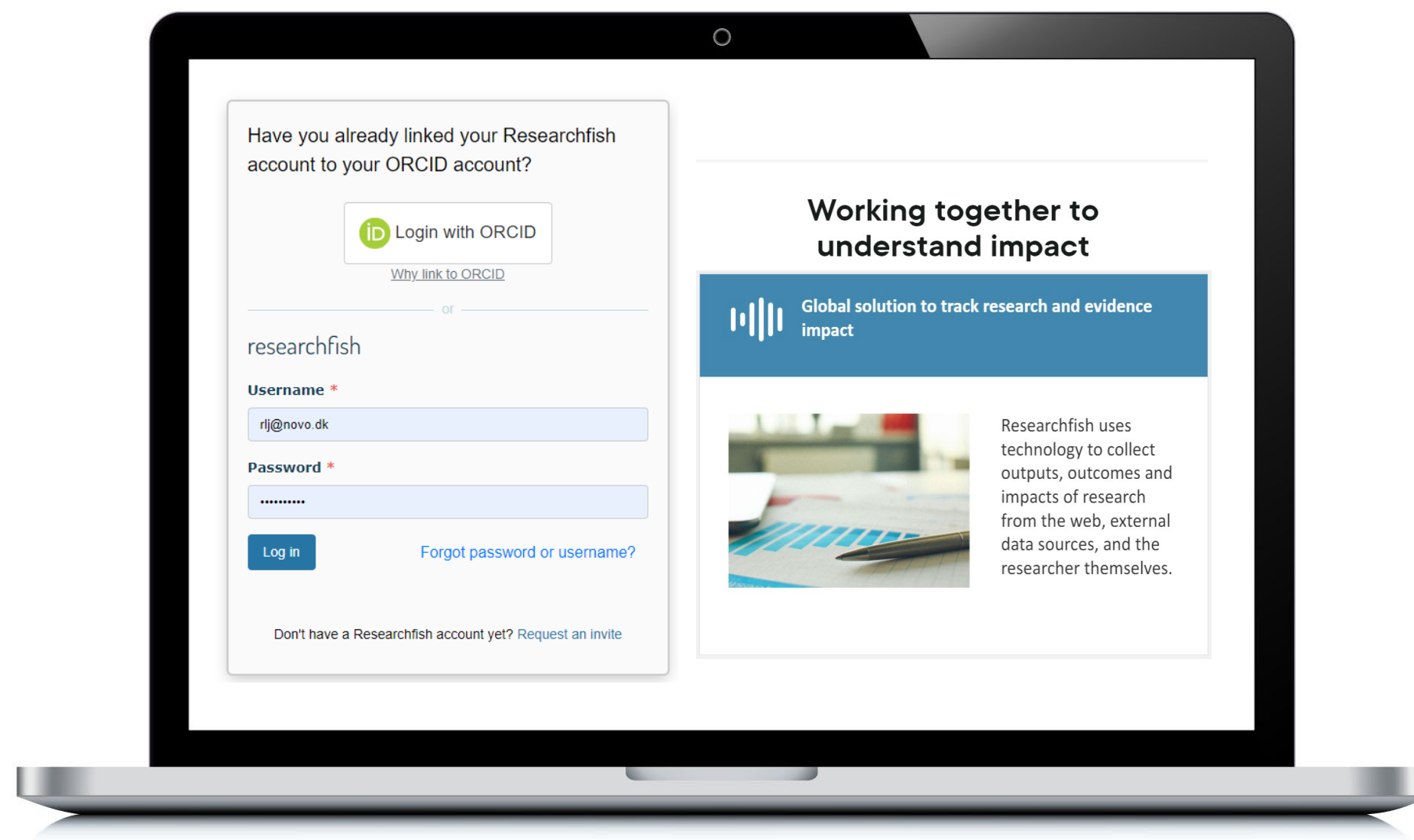
[Principles of use for data submitted to the Novo Nordisk Foundation](#)

I accept the above terms and conditions.

[← EDIT YOUR SUBMISSION](#) [SUBMIT TO FUNDER →](#)

# Hands-on with Researchfish®

## - How you report



# Reporting to the Novo Nordisk Foundation

- No initiative is too small to report
- All initiatives are required to report at least once a year
- We will remind you of **upcoming reporting deadlines**
  
- **Looking for help:**
  - The NNF website <https://novonordiskfonden.dk/en/impact/reporting/?tab=researchfish>
  - The Researchfish website [www.researchfish.com](http://www.researchfish.com) and the Researchfish YouTube channel <https://www.youtube.com/channel/UCO2ATracZndgz93wpEwDBEg>
  
- **Contact Researchfish<sup>®</sup>** support [support@researchfish.com](mailto:support@researchfish.com) if you have technical questions, e.g., login problem etc.
- **Contact NNF-Impact** [reporting@novo.dk](mailto:reporting@novo.dk) if you have questions to the content of your reporting

ново  
нордиск  
фонден

Thank you

Head of Data, NNF-Impact  
Rasmus Lund Jensen  
[registration@novonordiskfonden.dk](mailto:registration@novonordiskfonden.dk)